



CTC-1

150 » 1000kg

CAPACITY

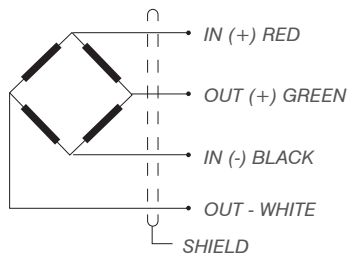
TENSION LOAD CELL

APPLICATIONS

Crane Scales, Silos and hopper weighing.
 Overload protection.

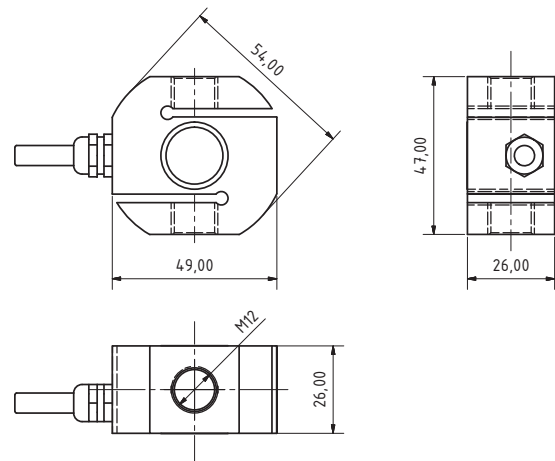
FEATURES

Tension load cell.
 3000 divisions OIML R60 Class C.
 Hermetically sealed by laser welding.
 Fully stainless steel construction.
 Protected against humidity IP68 (EN60529).



SPECIFICATIONS

Nominal capacities	150-300-500-750-1000 kg
Accuracy class	3000
Input impedance	386Ω±2%
Output impedance	350±3Ω
Input voltage range	5..12 V
Nominal sensitivity	2mV/V
Operating temperature range	-10 a +50°C
Service load	150% (N.L.)
Safe load limit	> 200 % (N.L.)
Sensitivity tolerance	+/- 0.1% (N.L.)
Temperature effect on sensitivity (-10...+40°C)	< +/-0.001%/°C
Temperature effect on zero (-10...+50°C)	< +/-0.001%/°C
Maximum combined error:	< +/- 0.02 (N.L.)
Creep in 30' at 20°C	+/- 0.02%
Cable length	5 m
Electrical connection	4 wires



Dimensions (mm)

Reference	Nominal capacities - Ln (kg)	Accuracy class n. OIML	y = emax / vmin	# Code
CTC-1/150	150	3000	7500	710054
CTC-1/300	300	3000	7500	710055
CTC-1/500	500	3000	7500	710056
CTC-1/750	750	3000	7500	710057
CTC-1/1000	1000	3000	7500	710058

Ref. Accessories	Description	#Code
RTSCM	Rod end bearing	

