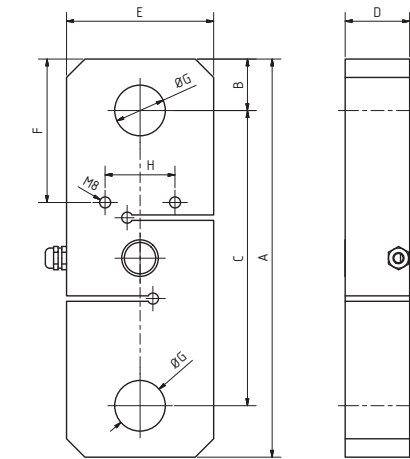




SPECIFICATIONS

Nominal capacities (Ln)	3000-6000-10000-15000- 20000-25000-30000
Accuracy class	3000
Input impedance	386Ω±2%
Output impedance	350±3Ω
Input voltage range	5..12 V
Nominal sensitivity	2mV/V
Operating temperature range	-10 a +50°C
Service load	150% (N.L.)
Safe load limit	>400 % (N.L.)
Sensitivity tolerance	+/- 0.1% (N.L.)
Temperature effect on sensitivity (-10...+40°C)	< +/-0.001%/°C
Temperature effect on zero(-10...+50°C)	< +/-0.002%/°C
Maximum combined error	< +/- 0.02 (N.L.)
Creep in 30' at 20°C	+/- 0.02%
Cable length	5 m
Electrical connection	4 wires



Dimensions (mm)

C.N (kg)	A	B	C	D	E	F	ø G	H
3000	229	25.5	178	27	100	77	20	70
6000	264	35	194	35	110	90.5	26	70
10000	281	41	199	42	120	98.5	32	70
15000	361	46	269	60	130	115.5	43	70
20000	389	60	269	68	140	129.5	52	80
25000	400	60	280	68	160	140	52	80
30000	400	60	280	80	160	140	58	80

TSC-2

3000 » 30000 kg

CAPACITY

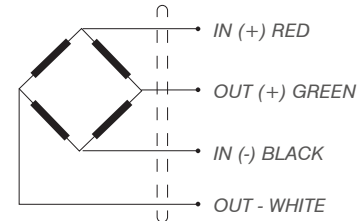
TENSION LOAD CELL

APPLICATIONS

Cranes, Crane Scales, Silos.
Hopper weighing. Overload protection.

FEATURES

Tension load cell.
3000 divisions OIML R60 Class C.
Hermetically sealed.
Fully stainless steel construction.
Protected against humidity IP67 (EN60529).



Reference	Nominal capacities - Ln (kg)	Accuracy class n. OIML	y= emax/vmin	#Code
TSC-2/3000	3000	3000	7500	710258
TSC-2/6000	6000	3000	7500	710259
TSC2/10000	10000	3000	7500	710260
TSC2/15000	15000	3000	7500	710261
TSC2/20000	20000	3000	7500	710262
TSC2/25000	25000	3000	7500	710263
TSC2/30000	30000	3000	7500	710264