

**SPECIFICATIONS**

Nominal capacities (Ln)	75.000-80.000-85.0000 -90.000-100.000-125.000-150.000 kg
Accuracy class	3000
Input impedance	800Ω±2%
Output impedance	700±3%Ω
Input voltage range	5..12 V
Nominal sensitivity	2mV/V
Operating temperature range	-10 a +50°C
Service load	150% (N.L.)
Safe load limit	> 200 % (N.L.)
Sensitivity tolerance	+/- 0.1% (N.L.)
Temperature effect on sensitivity (-10...+40°C)	< +/-0.001%/°C
Temperature effect on zero (-10...+50°C)	< +/-0.002%/°C
Maximum combined error	< +/- 0.02 (N.L.)
Creep in 30' at 20°C	+/- 0.02%
Cable length	18 m
Electrical connection	a 6 wires (sense)

**CP-16**  
**75 t » 150 t**  
CAPACITY

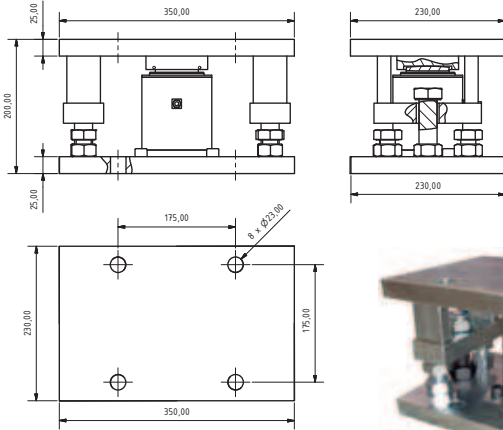
COMPRESSION LOAD CELL

**APPLICATIONS**

Silos, Tanks, others.

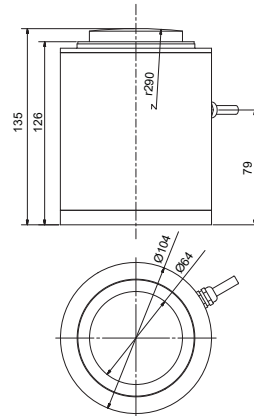
**FEATURES**

- Compression load cell.
- 3000 divisions OIML R60 Class C.
- Stainless steel construction.
- Hermetically sealed by laser welding.
- Protected against humidity IP68.



Dimensions (mm)

**MOUNTING KIT FOR SILOS. LIFT OFF PROTECTION CP-11**



Dimensions (mm)

Reference	Nominal capacities - Ln (kg)	Accuracy class n. OIML	y = emax / vmin	#Code
CP-16/75000	75000	3000	10000	710014
CP-16/80000	80000	3000	10000	710015
CP-16/85000	85000	3000	10000	710016
CP-16/90000	90000	3000	10000	710017
CP-16/100000	100000	3000	10000	710018
CP-16/125000	125000	3000	10000	710019
CP-16/150000	150000	3000	10000	710020
Ref.	Description			#Code
AVCP-16	Mounting kit for silos. Lift off protection AVCP-16			510052

