



GS-1Ai

15 » 1500kg CAPACITY

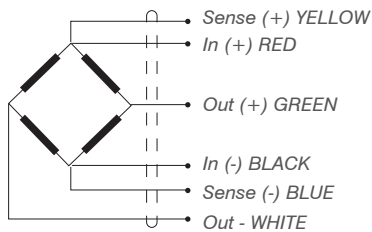
BENDING BEAM LOAD CELL


APPLICATIONS

Hybrid scales.
 Fully electronic scales.
 Silos – Hopper weighing – Tanks.
 Platforms 4 load cells.
 Industrial environments.

FEATURES

Bending beam load cell/shear beam.
 4000 divisions OIML R60 Class C.
 Fully stainless steel construction.
 Hermetically sealed by laser welding.
 Protected against humidity IP68 (EN60529).

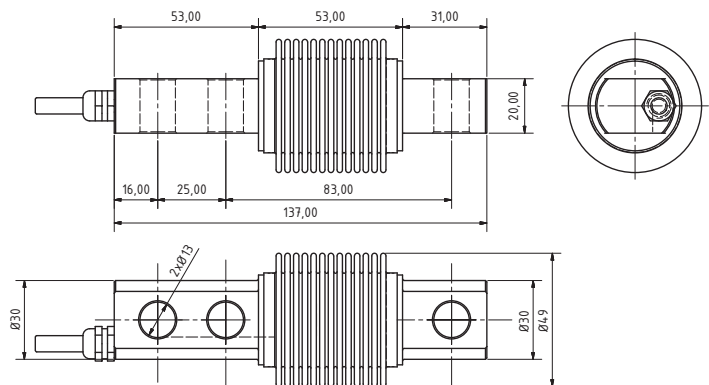


 3000d OIML Certificate No.R60/1991-GB-96.03
 E-15.02.C01



SPECIFICATIONS

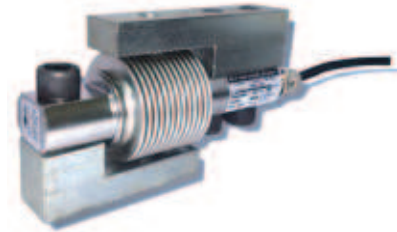
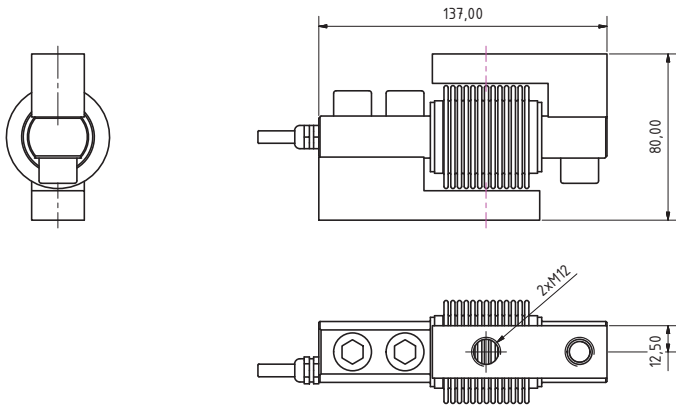
	15-30-50-75-100-150-200-300-500-750-1000-1500 kg
Nominal capacities (LN)	1500 kg
Accuracy class	4000 n. OIML
Minimum dead load	0 %Ln
Service load	150 %Ln
Safe load limit	200 %Ln
Maximum combined error	< ±0.017 %Sn
Repeatability error	< ±0.015 %Sn
Temperature effect: On zero on sensitivity	< ±0.01 %Sn/5°C < ±0.006 %Sn/5°C
Creep error	< ±0.016 %Sn
Temperature compensation	-10..40 °C
Temperature limits	-20..50 °C
Nominal sensitivity	2±0.1% mV/V (2)
Nominal input voltage	10 V
Maximum input voltage	15 V
Input impedance	386Ω±2%
Output impedance	350±3Ω
No load output (SN)	< ±2 %Sn
Insulation resistance	> 5000
Maximum deflection	0.2-0.4
Cable length	5 m



Dimensions (mm)

References		Nominal capacities - Ln (kg)	Accuracy class n. OIML	y = emax / vmin	#Code
GS-1Ai/15	M	15	C4	10000	710066
GS-1Ai/30	M	30	C4	10000	710067
GS-1Ai/50		50	C4	10000	710068
GS-1Ai/75		75	C4	10000	710069
GS-1Ai/100		100	C4	10000	710070
GS-1Ai/150		150	C4	10000	710071
GS-1Ai/200		200	C4	10000	710072
GS-1Ai/250		250	C4	10000	710073
GS-1Ai/300		300	C3	10000	710074
GS-1Ai/500	M	500	C4	10000	710075
GS-1Ai/750	M	750	C4	10000	710077
GS-1Ai/1000	M	1000	C4	10000	710078
GS-1Ai/1500	M	1500	C4	10000	710079



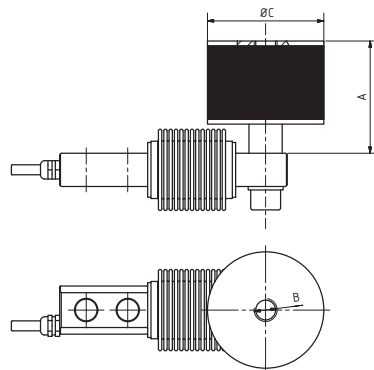


Dimensions (mm)

	A	B	C	D	E
M-12	80	137	79,5	25	
M-16	80	137	79,5	25	

TENSION ACCESSORY

Ref.	Description	Nominal capacities (kg)	#Code
PGS-1A12	Tension accessory M12	15-300	510048
PGS-1A M16	Tension accessory M16	500-1500	-

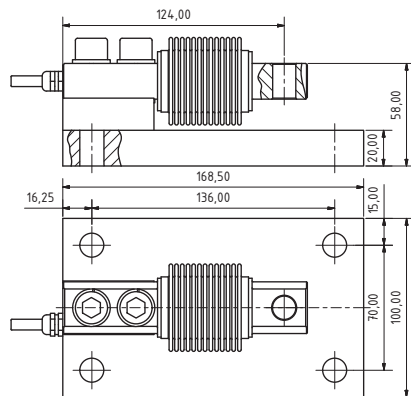


Dimensions (mm)

Capacity up to (kg)	A	B	C
300	68	M12	70
500	63	M12	75
1000	58	M16	100

SILENT-BLOCK

Ref.	Description	#Code
SGS-1A	Silent Block	510072



Dimensions (mm)



BASE PLATE

Ref.	Description	#Code
BGS-1A	Base plate. Zinc plated steel	510070
BGS-1Ai	Base plate. Stainless steel	510096